

## Pomeas High Resolution Bi-telecentric Lens Series

### PMS-2HT-65-C

1. Support 3 MP camera
2. Bi-telecentric Lens
3. Super low distortion ; Object side telecentricity is less than  $0.016^\circ$  ;  
Image side telecentricity is less than  $0.069^\circ$  ;
4. Even illumination, no image vignetting
5. Suitable in machine vision application of high accurate measurement



Max.Sensor Size  
1/2"

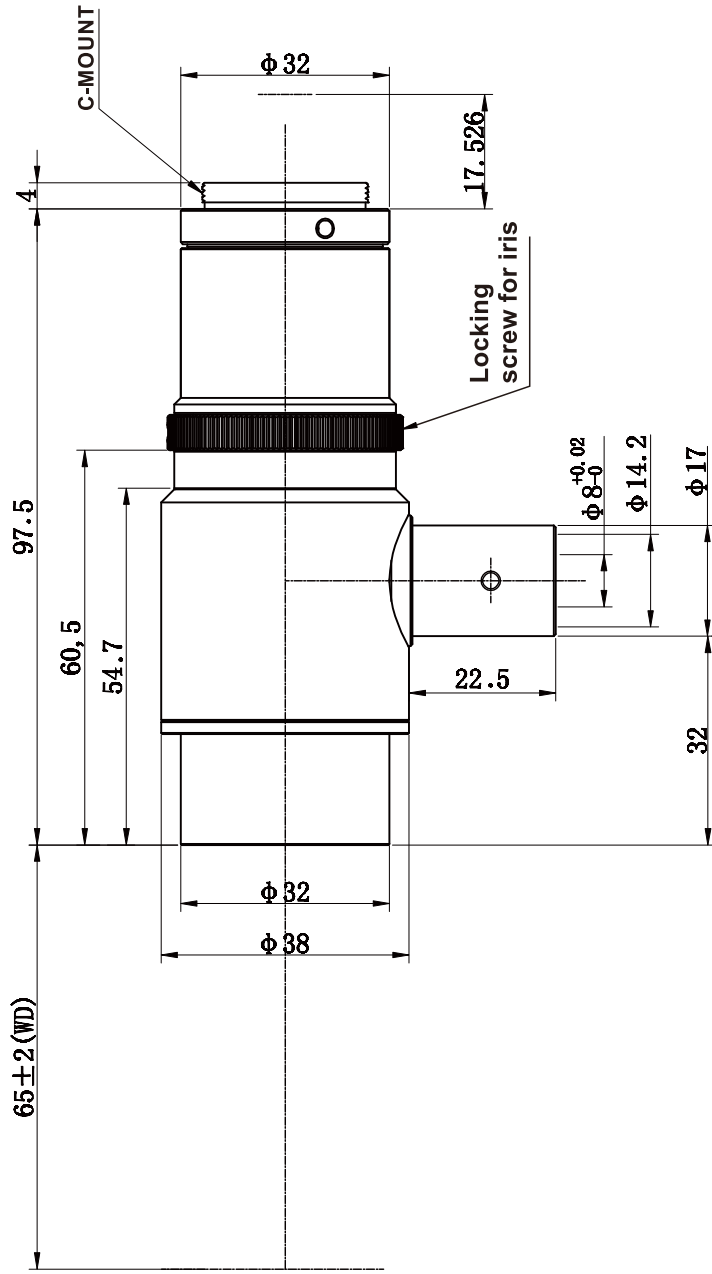
Magnification  
2.0X


Working Distance  
65mm

Iris is Adjustable

C-Mount

Code		PMS-2HT-65-C
<b>Magnification</b>		2.0X
<b>Field of View</b>	1/4"	1.6mm×1.2mm
	1/3"	2.4mm×1.8mm
	1/2.5"	2.9mm×2.2mm
	1/2.3"	3.1mm×2.3mm
	1/2"	3.2mm×2.4mm
<b>Working Distance</b>		65mm
<b>Resolution(MAX)</b>		2.2μm (MAX)
<b>F.No.(MAX)</b>		F6.6 (MAX)
<b>TV Distortion</b>		0.05%
<b>Depth of Field(MAX)</b>		0.13mm (MAX)
<b>N.A.(MAX)</b>		0.152 (MAX)
<b>Central MTF @ 100lp/mm</b>		>50%
<b>Object Side Telecentricity</b>		<0.016°
<b>Image Side Telecentricity</b>		<0.069°
<b>Max.Sensor Size</b>		1/2"
<b>Mount</b>		C-Mount
<b>Illumination</b>		Coaxial Illumination
<b>Working Temperature</b>		-10°C ~ +50°C



Unit:mm	Scale	1:1
	Name	PMS-2HT-65-C
inch 1.0	Date	2012.9.13
mm 25.0	<b>POMEAS</b>	