



12.5X Guide Electric Zoom Lens

Built-in double rail structure, high precision and high efficiency, small coefficient of friction. The performance, accuracy, stability and service life of the lens are improved.

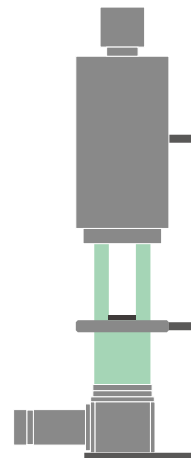
PRODUCT ADVANTAGES

1. High magnification ratio 12.5x.
2. Rail structure, zoom times unlimited.
3. High contrast.
4. Zooming fast and accurate.

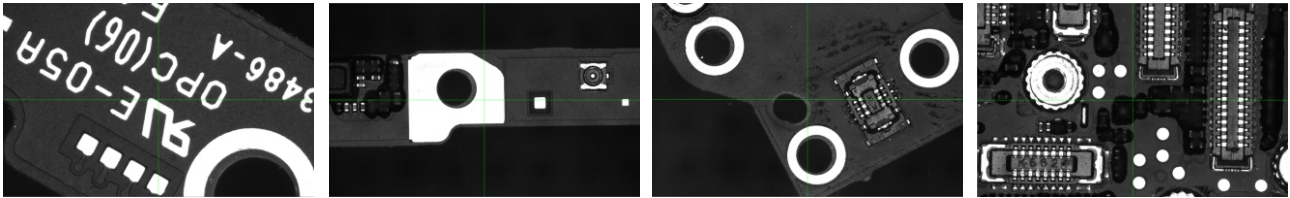
APPLICATION FIELDS

Widely used in biology, electronic, semiconductor, machine vision field, etc.

EXAMPLES OF APPLICATION

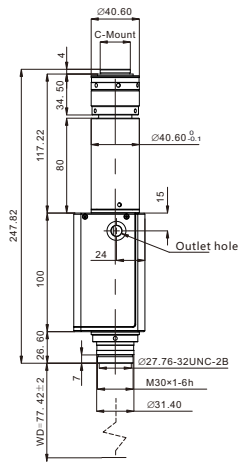


ACTUAL IMAGE



Optical magnification	0.58X-7.5X																
W.D.(mm)	77.4±2mm																
Magnification	0.58X	0.6X	1X	1.5X	2X	2.5X	3X	3.5X	4X	4.5X	5X	5.5X	6X	6.5X	7X	7.5X	
DOF(mm)	2.75	2.67	0.95	0.43	0.27	0.2	0.15	0.12	0.1	0.081	0.073	0.066	0.061	0.056	0.052	0.05	
N.A.	0.025	0.025	0.043	0.063	0.074	0.082	0.09	0.097	0.1	0.11	0.11	0.11	0.11	0.11	0.11	0.11	
F.No.	12.5	12.5	11.85	11.95	13.65	15.3	16.5	18.4	19.9	20.4	22.45	22.7	26.8	29.4	31.7	33.9	
Resolution(μm)	13	13	7.8	5.3	4.53	4.09	3.73	3.46	3.36	3.05	3.05	3.05	3.05	3.05	3.05	3.05	
TV Distortion	0.050%	0.050%	0.002%	0.010%	0.020%	0.003%	0.020%	0.020%	0.018%	0.020%	0.010%	0.010%	0.001%	0.010%	0.005%	0.005%	
2/3" Field of view size (mm)	D	18.97	18.33	11	7.33	5.5	4.4	3.67	3.14	2.75	2.44	2.2	2	1.83	1.69	1.57	1.47
	L	15.17	14.67	8.8	5.87	4.4	3.52	2.93	2.51	2.2	1.96	1.76	1.6	1.47	1.35	1.26	1.17
	H	11.38	11	6.6	4.4	3.3	2.64	2.2	1.89	1.65	1.47	1.32	1.2	1.1	1.02	0.94	0.88
MAX.Sensor Size	2/3"																
Mount	C-Mount																

PMS-G125M



PMS-G125M-C

