

3DOS-D System

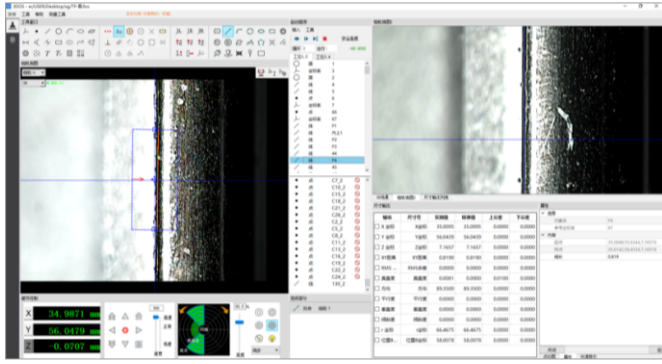
Measurable Geometric Quantities / Constructions / Form and Position Tolerances

3DOS-D System System Features

| Category | Item |
|--|---|
| Software Guide And Output Requirements | 1. Support CAD format import for 2D contour degree comparison. 2. Support STP and other 3D drawings for number mode comparison. 3. Support scanning contour output point map (dxf or other). |
| Measurement Function | 1. Measurable Geometric Quantities: points, lines, circles (maximum, minimum and average), arcs, spline curves, ellipses, rectangles, quadrilaterals, slots, R-angles, rings, spacing, distances, point groups, etc.. 2. Build: center point, extreme points, endpoints, intersection, two-point line, parallel lines, perpendicular lines, tangent lines, bisectors, center line, merge, contour segmentation, radius drawing circle, three-line tangent circle, two-line radius tangent circle, etc.. 3. Shape And Location Tolerances: straightness, roundness, position, parallelism, perpendicularity, Inclination, concentricity. |
| Operation | 1. Can generate tasks for fully automatic batch measurement, and support automatic and manual interactive operation. 2. Automatic mode, the product put crooked can be automatically compensated for correction. |
| Interface Language | Chinese/English |
| Judgment Prompts | OK/NG abnormal prompts |
| Data Saving | 1. The data corresponding to the detected good and bad products are recorded, and the data can be saved automatically and stored in the industrial control machine at the same time. Data records include test time, size, thickness, flatness, warpage, curvature data, results (NG or OK). 2. Output Excel, HTML reports |

3DOS-D System System Features

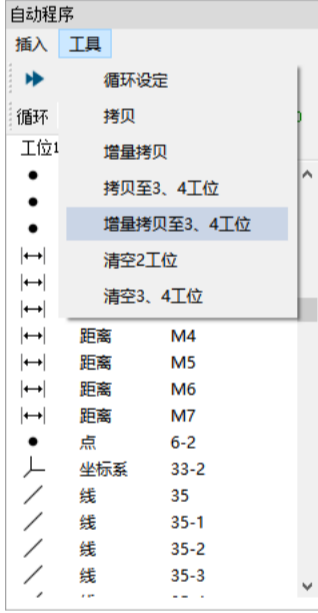
1. Multi-station multi-threaded parallel, greatly improve the measurement efficiency.



2. Support duplex edge-seeking and picking point tools synchronized copy, doubling the programming efficiency.

3. Support for fine-tuning any workstation program, higher flexibility.

4. A variety of dimensions and tolerance calculation output, the real online production support tools;



| 尺寸号 | FAI1-1 | FAI1-2 | FAI1-3 | FAI1-4 | FAI1-5 | FAI5-1 | FAI5-2 |
|-----|---------|---------|---------|---------|---------|----------|----------|
| 标准值 | 71.7300 | 71.7300 | 71.7300 | 71.7300 | 71.7300 | 153.0300 | 153.0300 |
| 上公差 | 0.1000 | 0.1000 | 0.1000 | 0.1000 | 0.1000 | 0.1000 | 0.1000 |
| 下公差 | -0.0500 | -0.0500 | -0.0500 | -0.0500 | -0.0500 | -0.0500 | -0.0500 |
| 1 | NG | 71.6485 | 71.5899 | 71.6236 | 71.6600 | 71.6841 | 152.9010 |
| 2 | NG | 71.6241 | 71.5711 | 71.6321 | 71.6607 | 152.8711 | 152.8258 |

5. Supports two modes of programmer/operator, avoiding misoperation and lowering the threshold of production line use.

