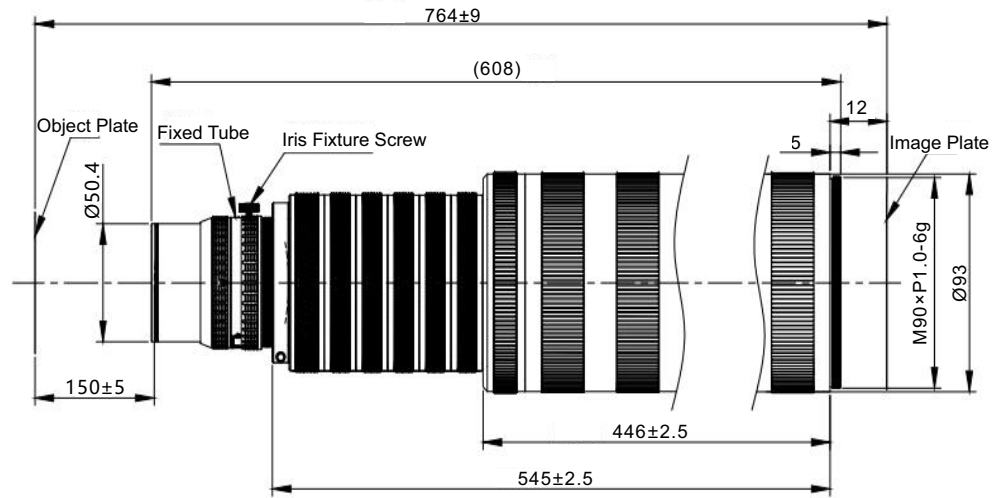


PMS-LLD300-14640M

Description



※ The max. sensor Ø82mm image, ultra-low distortion, shock-proof design, Standard Mag. range 2.7X ~ 3.5X.

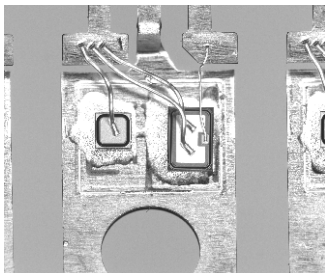
PMS-LLD300-14640M

Parameters

Code	PMS-LLD300-14640M		
Max. FOV (mm)	Ø82		
Resolution (µm)	10		
Standard Mag. (X)	2.7	3.0	3.5
Aperture	4.0~16		
Focus (mm)	146		
Distortion	<0.002%		
Relative Illumination	90%		
Working Distance (mm)	157	150	144
Conjugate Distance (mm)	717	764	826
Mount	M72-Mount		

PMS-LLD300-14640M

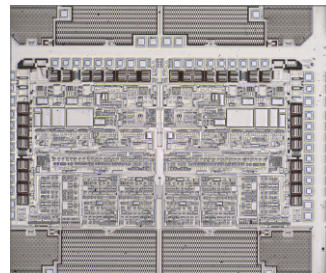
Product Case



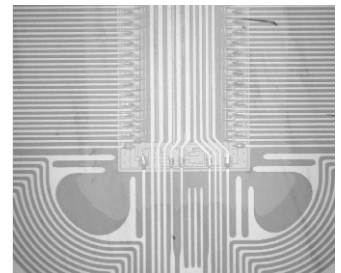
Defect Detection



Surface Pattern And Color Detection



PCB Defect Detection



PCB Detection

