

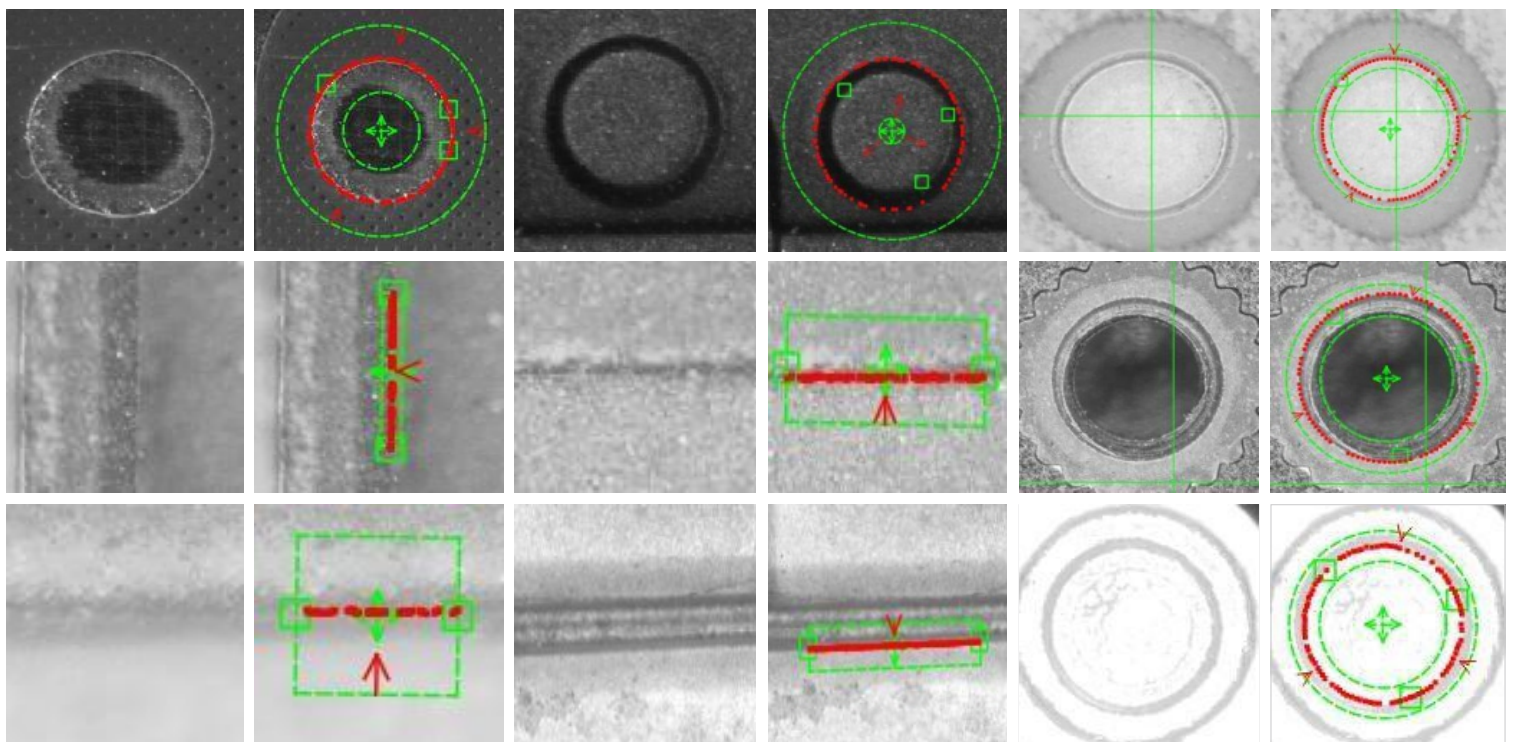
## MetX M Multi Sensor Measurement System

Semi-Automatic Multi-Sensor Rapid Measurement

Function	
Basic Measurement Functions	1. Geometric: points, lines, circles (maximum, minimum and average), arcs, spline curves, ellipses, rectangles, quadrilaterals, slots, R-angles, rings, spacings, distances, clusters of points, etc..
	2. Construct: centre point, extreme point, end point, intersection point, two-point line, parallel line, perpendicular line, tangent line, bisector, centre line, merge, contour division, radius circle, three-lane tangent circle, two-lane radius tangent circle, and so on.
	3. Form and position tolerance: straightness, roundness, position, parallelism, perpendicularity, inclination, concentricity.

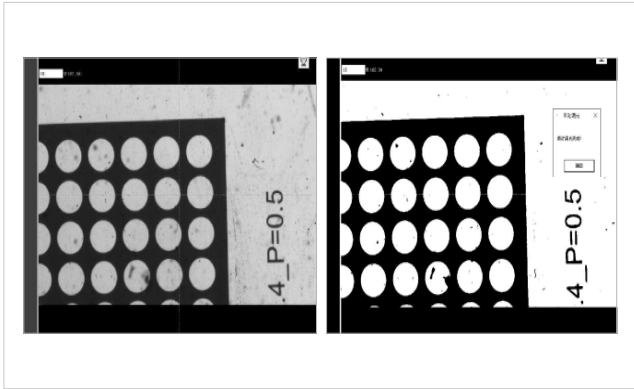
### Fully Automatic Edge Finding

Powerful surface light algorithms, fully automatic edge finding, accurate fitting elements, for complex edge features, provides a variety of edge finding aids, greatly improving work efficiency and reducing the difficulty of measurement;



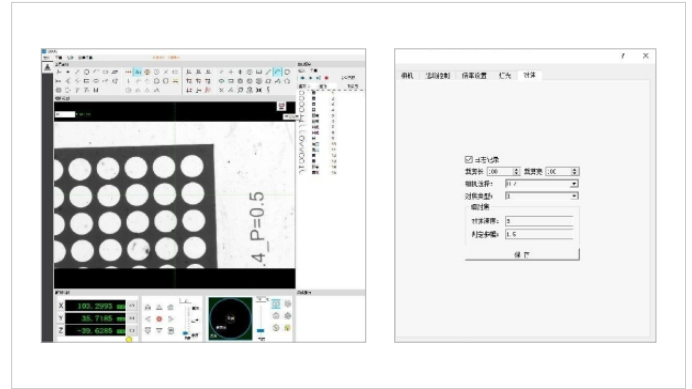
## Automatic Dimming

The bottom light can be adjusted to the right state within 1s with one click, which improves the measurement efficiency.



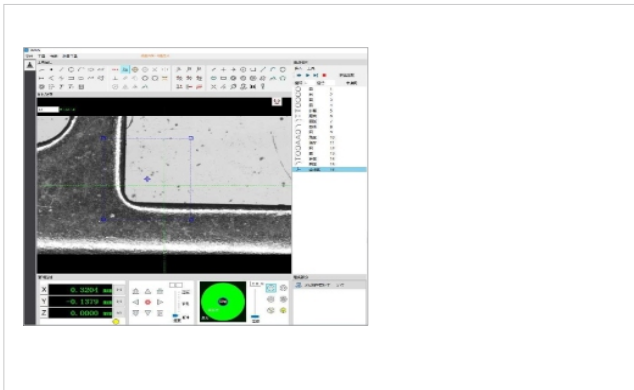
## Autofocus

Enable when Z-axis is auto axis, one button can focus the feature within 2~5s under different magnification.



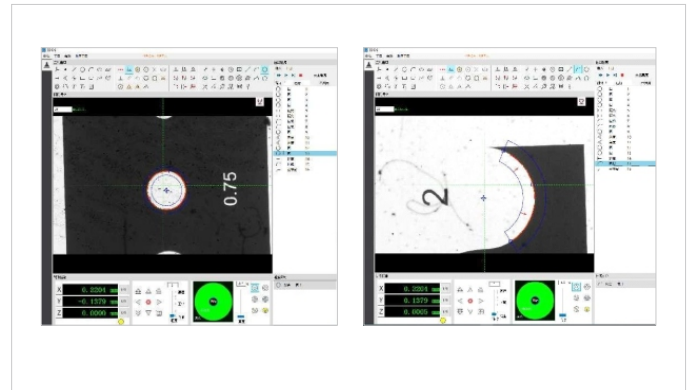
## Feature Position

The product can be positioned on the feature and subsequently measured accurately no matter how the product is placed in the field of view.



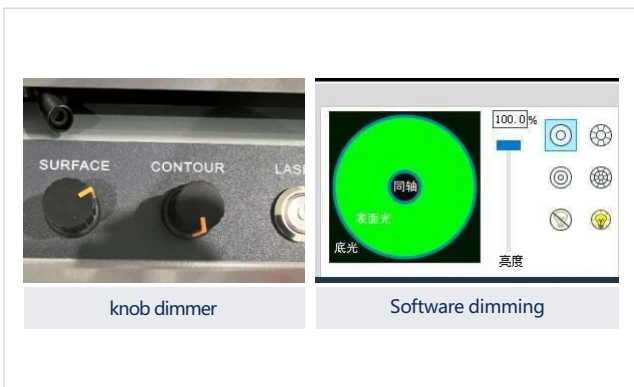
## Elements Slideshow

Elements built after the programme has been run can be confirmed and details modified quickly and easily through the slide show function.



## Adjustment Of Light Source

Light source adjustment can be controlled by knob and software, convenient and quick.



## Arrow Guidance

The image arrow guide can be used to find the exact position of the workpiece to be measured, and when it reaches the approximate position, it automatically searches for the edge, and the moving error arrow will be displayed in red;

